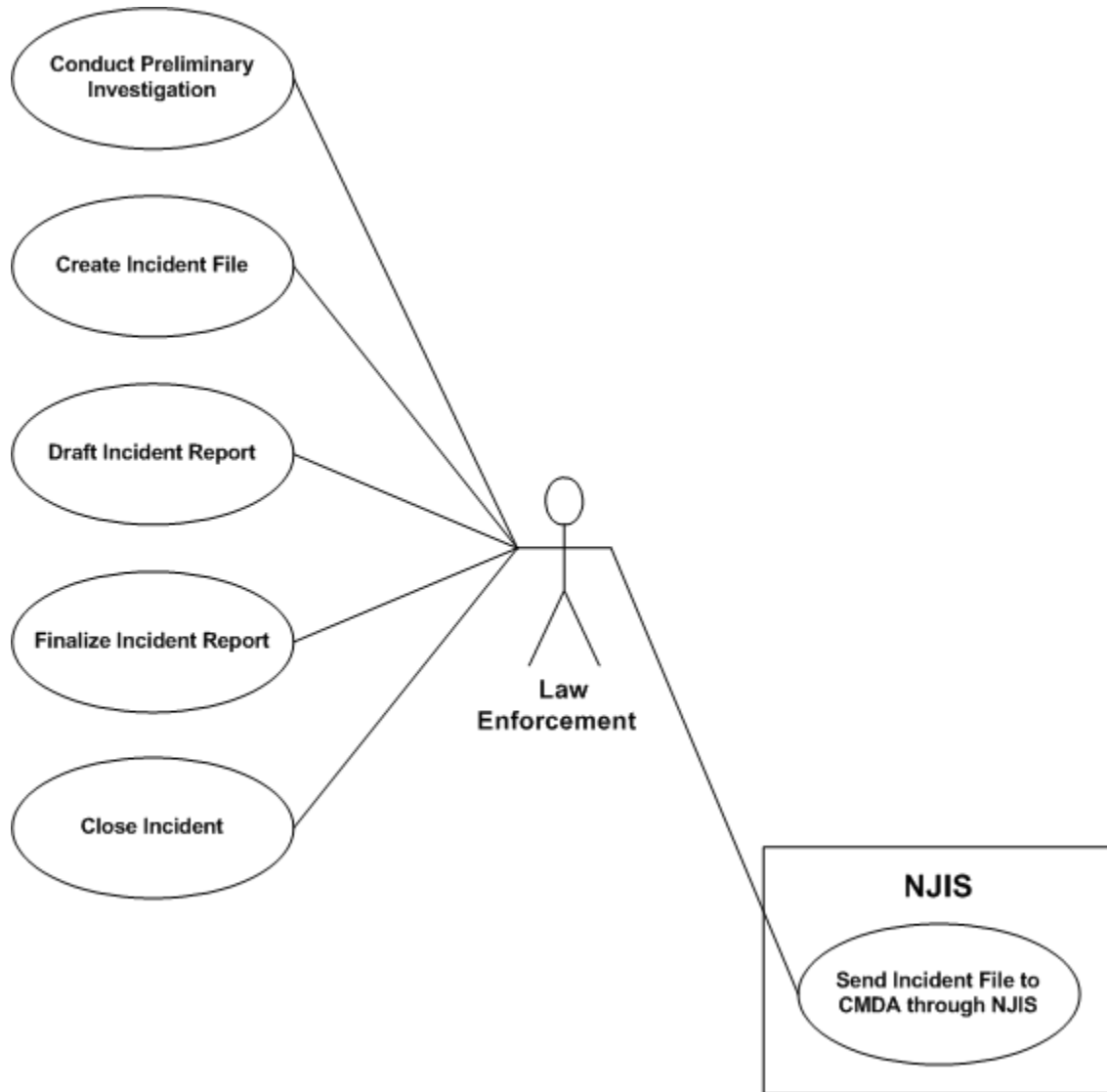


Use Cases Functional Requirements Document

Use Case Identifier	Use Case 1
Description	Law Enforcement (LE) conducts a preliminary investigation of an incident not related to an existing incident, determines not to request an investigation from Investigations (INV), creates and finalizes an incident report, closes the incident report, and sends the incident file to Command Actions (CMDA).
Primary Actor	LE
Secondary Actor	CMDA
Primary Actor's Goal	Create and finalize an incident report, close the incident report, and send the incident file to CMDA.
Pre-Conditions	Dispatch officer is notified of an incident (i.e. via a phone call, another individual notifying LE via a walk-up, or LE comes upon the incident themselves), captures the incident information, and determines the incident is not related to an existing incident.
Post-Conditions	LE confirms the incident file was sent successfully to CMDA. If CMDA discovers any additional information relevant to the incident as the investigation proceeds it is sent to LE and the incident file is updated. LE can also add additional information to the incident file directly.
Basic Use Case Flow	<ol style="list-style-type: none"> 1. LE conducts a preliminary investigation 2. LE creates incident file. 3. LE drafts an incident report. 4. LE finalizes the incident report. 5. LE closes the incident. 6. LE determines where to send the incident file (i.e. CMDA or Civil Authority) and sends the incident file to CMDA through NJIS.

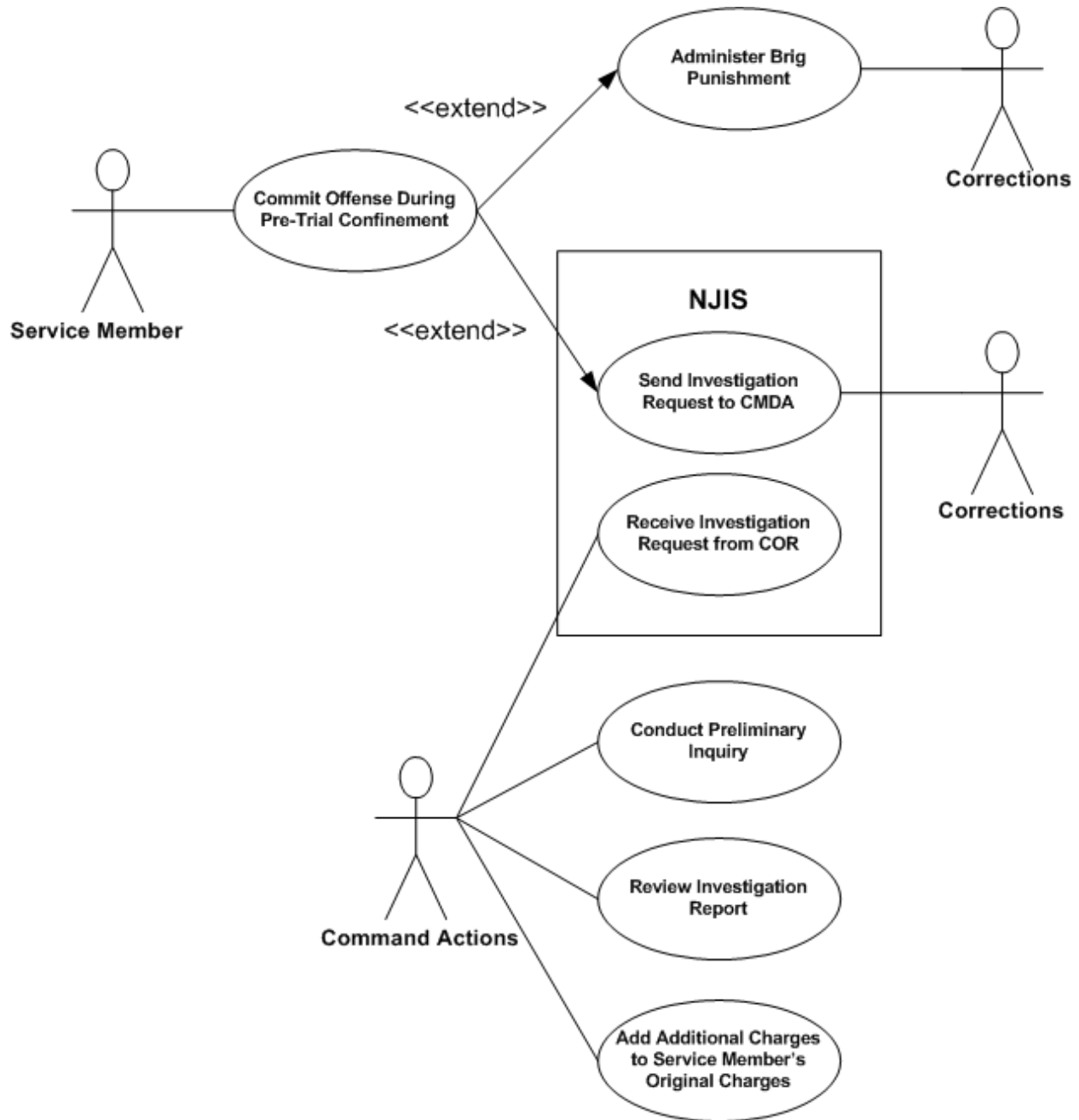
Use Cases Functional Requirements Document



Use Cases Functional Requirements Document

Use Case Identifier	Use Case 2
Description	Service member is in pre-trial confinement and commits an offense while in confinement. Corrections (COR) sends an investigation request to Command Actions (CMDA) or administers brig punishment.
Primary Actor	COR
Secondary Actor	CMDA
Primary Actor's Goal	Send investigation request to CMDA or administer brig punishment as consequence for incident
Pre-Conditions	Command notified of incident and sends incident to LE after preliminary inquiry. After finalizing incident file LE sends it to CMDA for adjudication. CMDA determines that pre-trial confinement is necessary and service member is sent to confinement. .
Post-Conditions	Service member stays in confinement until Command takes the service member for adjudication.
Basic Use Case Flow	<p>Investigation Request Sent to CMDA:</p> <ol style="list-style-type: none"> 1. Service Member commits offense during post-trial confinement. 2a. COR sends investigation request to CMDA through NJIS 3a. CMDA receives investigation request from COR through NJIS 4a. CMDA conducts preliminary inquiry. 5a. CMDA reviews investigation report. 6a. CMDA adds additional charges to service member's original charges if deemed necessary. <p>Brig Punishment Awarded:</p> <ol style="list-style-type: none"> 1. Service Member commits offense during post-trial confinement. 2b. COR administers brig punishment.

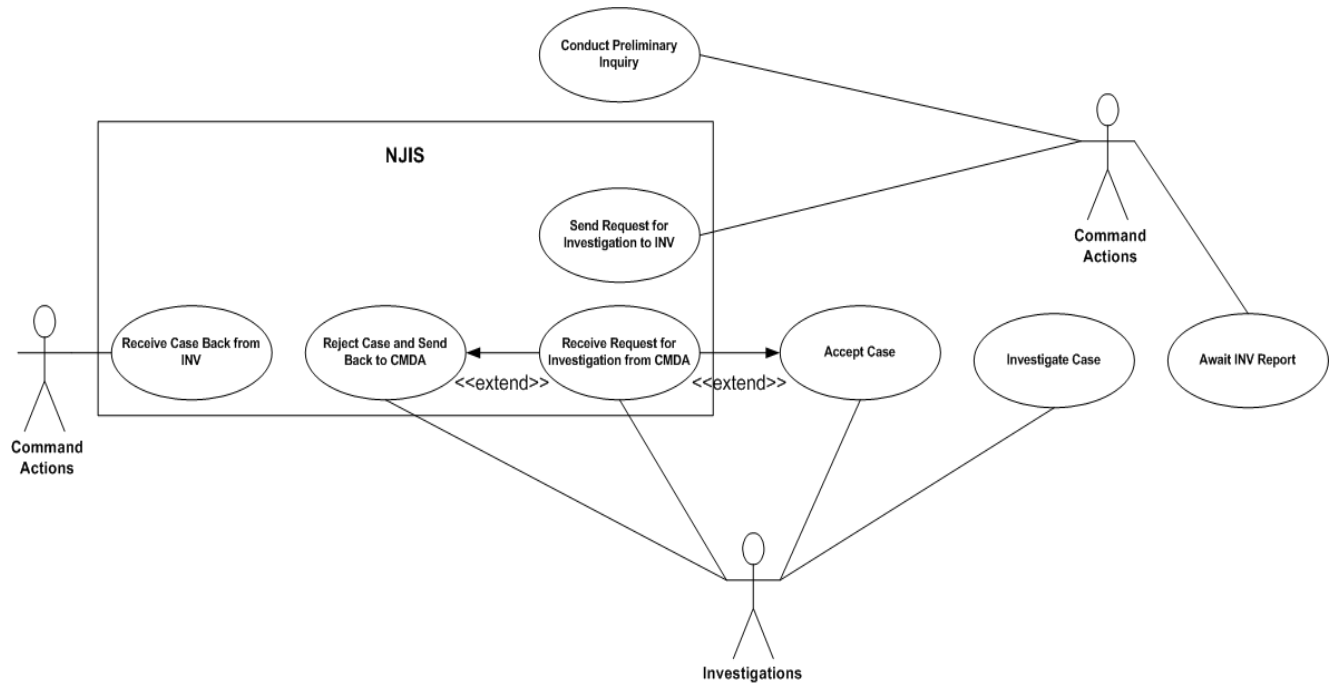
Use Cases Functional Requirements Document



Use Cases Functional Requirements Document

Use Case Identifier	Use Case 3
Description	An incident occurs within Command. Command Actions (CMDA) conducts a preliminary investigation and sends Request for Investigation to Investigations (INV). INV may or may not accept the case.
Primary Actor	CMDA
Secondary Actor	INV
Primary Actor's Goal	Conduct preliminary inquiry into incident and request investigation from INV.
Pre-Conditions	Incident occurs within Command.
Post-Conditions	If INV accepts the case, INV finalizes the investigation and sends the case back to CMDA. Case is then closed for INV and CMDA continues with the adjudication process. If INV does not accept the case, CMDA continues the adjudication process.
Basic Use Case Flow	<ol style="list-style-type: none"> 1. CMDA conducts preliminary inquiry of incident. 2. CMDA sends request for investigation to INV through NJIS. 3. INV receives request for investigation from CMDA through NJIS. <p>Branch 1: INV accepts case</p> <ol style="list-style-type: none"> 4a. INV determines that it is able to accept the case. 5a. INV actively investigates case. 6a. CMDA awaits INV report. <p>Branch 2: INV does not accept case</p> <ol style="list-style-type: none"> 4b. INV determines that it is unable to accept the case. 5b. INV sends the case back to CMDA through NJIS. 6b. CMDA receives case back from INV through NJIS.

Use Cases Functional Requirements Document



Use Cases

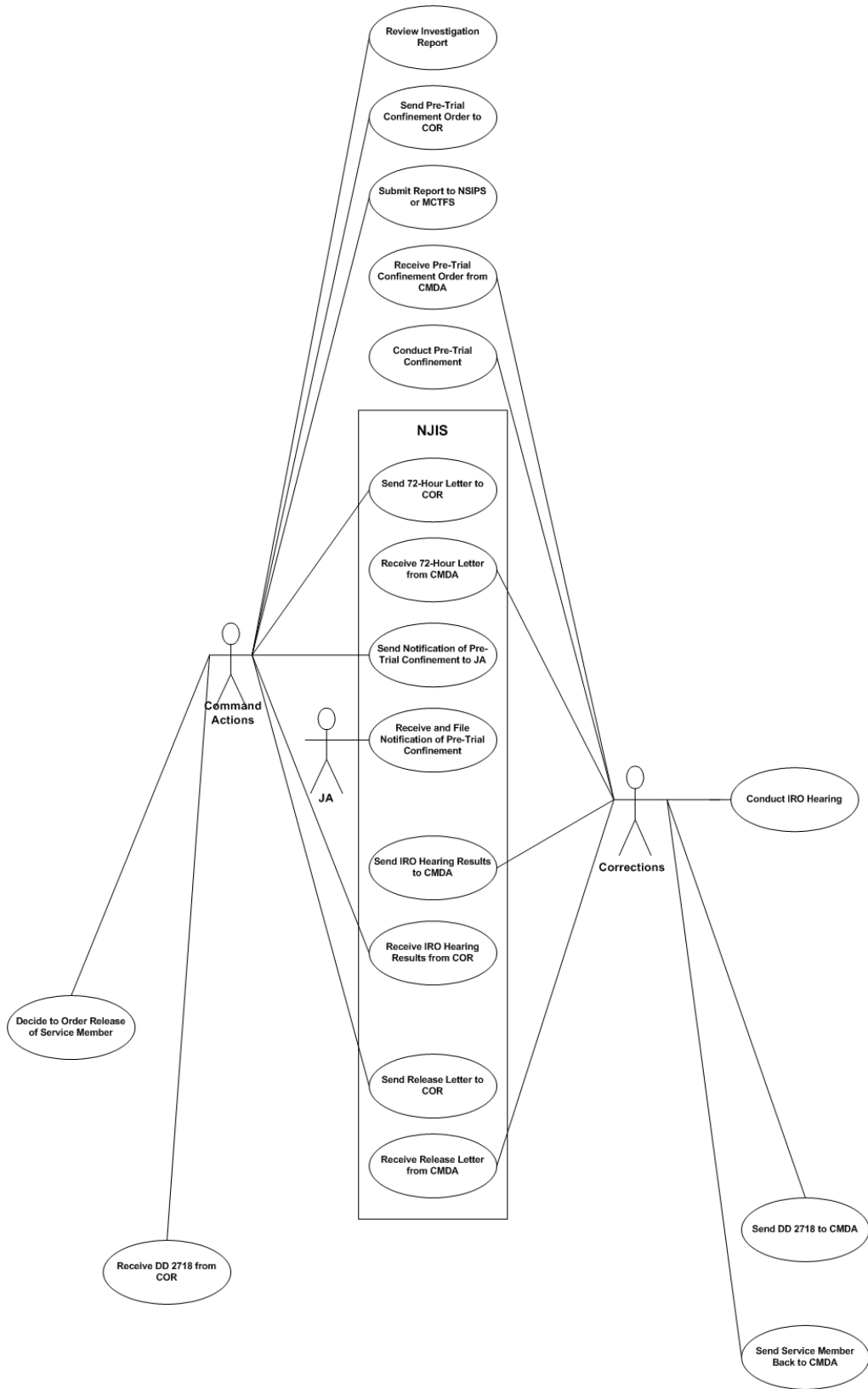
Functional Requirements Document

Use Case Identifier	Use Case 4
Description	Command Actions (CMDA) reviews Investigation Report, determines Pre-Trial Confinement is needed, and sends Pre-Trial Confinement Order to Corrections (COR). COR receives the Pre-Trial Confinement Order from CMDA and conducts Pre-Trial Confinement and an Initial Review Officer (IRO) hearing. IRO hearing results do not order the service member's release but CMDA orders the service member's release.
Primary Actor	CMDA, COR
Secondary Action	Judicial Actions (JA)
Primary Actor's Goal	Manage service member's Pre-Trial Confinement and IRO hearing process, coordinating service member's release when necessary.
Pre-Conditions	CMDA receives incident file from Law Enforcement (LE) or case from Investigations (INV). Service Member is not serving suspended portion of prior sentence.
Post-Conditions	COR case jurisdiction ends and CMDA continues adjudication process.
Basic Use Case Flow	<ol style="list-style-type: none"> 1. CMDA reviews Investigation Report. 2. CMDA sends Pre-Trial Confinement Order to COR. 3. CMDA submits a report to NSIPS or MCTFS. 4. COR receives a Pre-Trial Confinement Order from CMDA. 5. COR conducts Pre-Trial Confinement. 6. CMDA sends 72-hour letter to COR through NJIS. 7. COR receives 72-hour letter from CMDA through NJIS.

Use Cases Functional Requirements Document

8. CMDA sends Notification of Pre-Trial Confinement to JA through NJIS.
9. JA receives Notification of Pre-Trial Confinement from CMDA through NJIS and files the Notification of Pre-Trial Confinement.
10. COR conducts IRO hearing.
11. COR sends IRO hearing results to CMDA through NJIS.
12. CMDA receives IRO hearing results from COR through NJIS.
13. CMDA decides to order release of service member.
14. CMDA sends release letter to COR through NJIS.
15. COR receives release letter from CMDA through NJIS.
16. COR sends DD 2718 to CMDA.
17. CMDA receives DD 2718 from COR.
18. COR sends service member back to CMDA.

Use Cases Functional Requirements Document



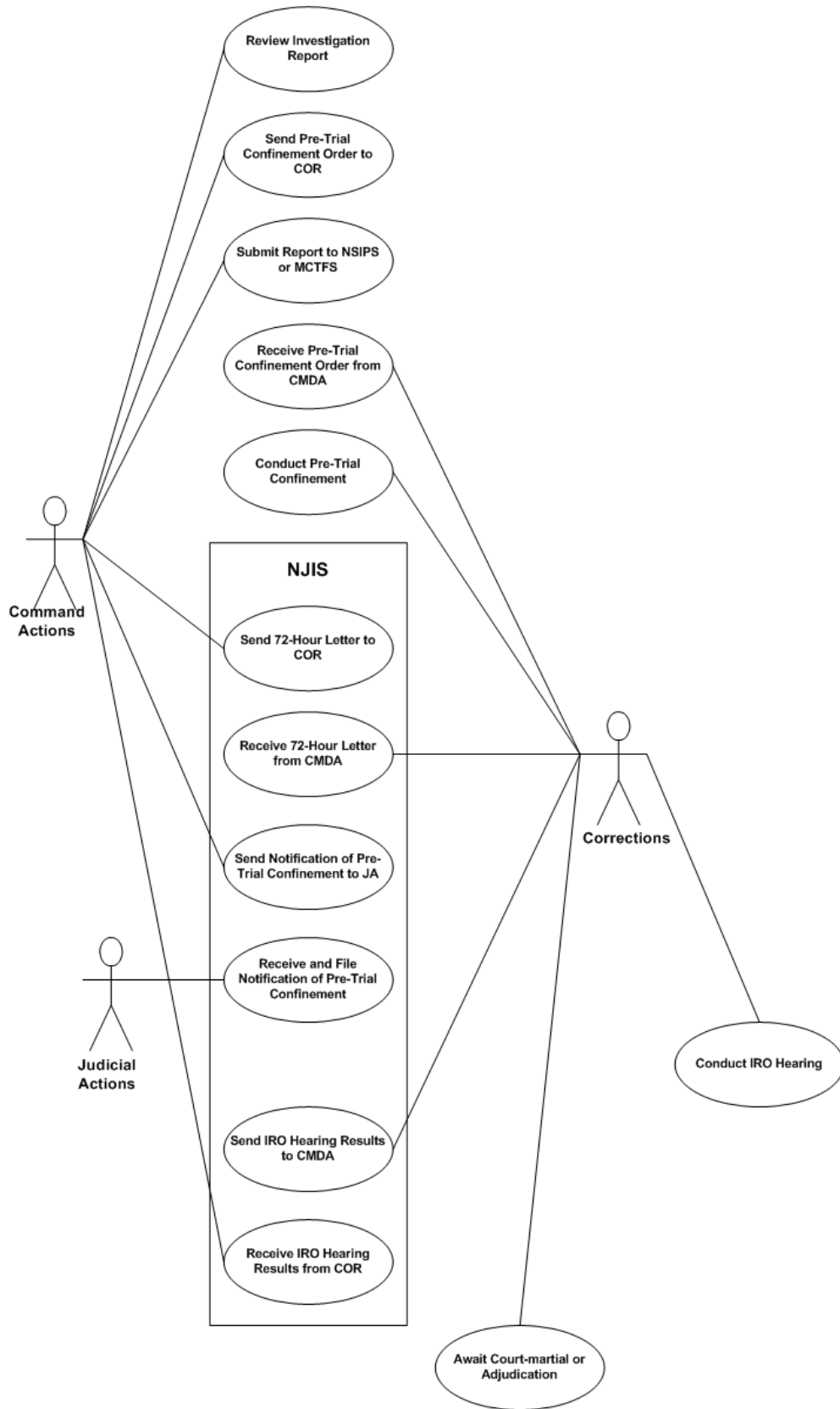
Use Cases Functional Requirements Document

Use Case Identifier	Use Case 5
Description	Command Actions (CMDA) reviews Investigation Report, determines Pre-Trial Confinement is needed, and sends Pre-Trial Confinement Order to Corrections (COR). COR receives the Pre-Trial Confinement Order from CMDA and conducts Pre-Trial Confinement and an Initial Review Officer (IRO) hearing. IRO hearing results do not order the service member's release and CMDA does not order the service member's release.
Primary Actor	CMDA, COR
Secondary Action	Judicial Actions (JA)
Primary Actor's Goal	Manage service member's Pre-Trial Confinement and IRO hearing process, coordinating service member's release when necessary.
Pre-Conditions	CMDA receives incident file from Law Enforcement (LE) or case from Investigations (INV). Service Member is not serving suspended portion of prior sentence.
Post-Conditions	Command takes Service Member for Adjudication.
Basic Use Case Flow	<ol style="list-style-type: none"> 1. CMDA reviews Investigation Report. 2. CMDA sends Pre-Trial Confinement Order to COR. 3. CMDA submits a report to NSIPS or MCTFS. 4. COR receives a Pre-Trial Confinement Order from CMDA. 5. COR conducts Pre-Trial Confinement. 6. CMDA sends 72-hour letter to COR through NJIS, 7. COR receives 72-hour letter from CMDA through NJIS. 8. CMDA sends Notification of Pre-Trial Confinement to JA through NJIS.

Use Cases Functional Requirements Document

- | | |
|--|---|
| | <ol style="list-style-type: none">9. JA receives Notification of Pre-Trial Confinement from CMDA through NJIS and files Notification of Pre-Trial Confinement.10. COR conducts IRO hearing.11. COR sends IRO hearing results to CMDA through NJIS.12. CMDA receives IRO hearing results from COR through NJIS.13. COR awaits court martial or adjudication. |
|--|---|

Use Cases Functional Requirements Document



Use Cases

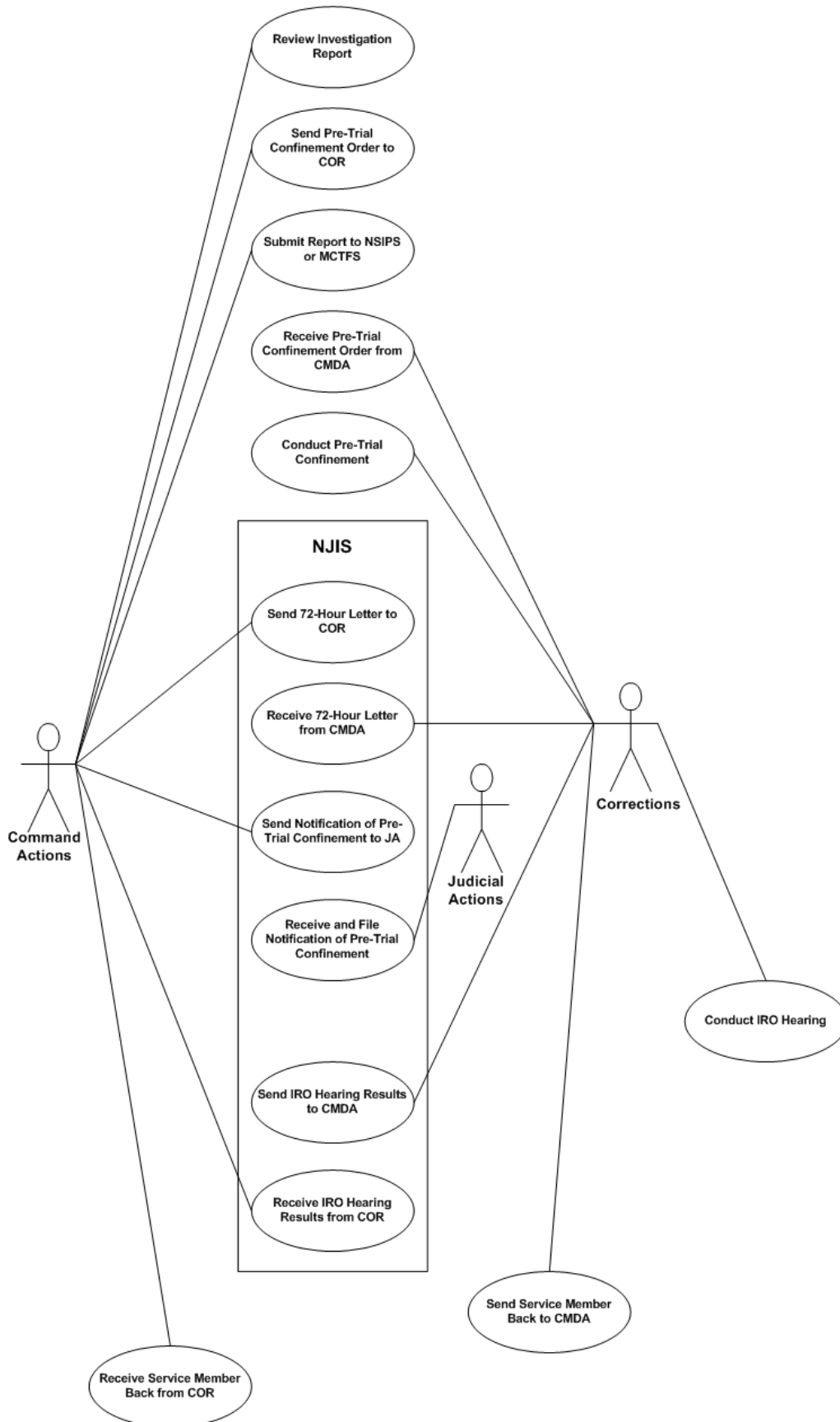
Functional Requirements Document

Use Case Identifier	Use Case 6
Description	Command Actions (CMDA) reviews Investigation Report, determines Pre-Trial Confinement is needed, and sends Pre-Trial Confinement Order to Corrections (COR). COR receives the Pre-Trial Confinement Order from CMDA and conducts Pre-Trial Confinement and an Initial Review Officer (IRO) hearing. IRO hearing results order the service member's release.
Primary Actor	CMDA, COR
Secondary Actor	Judicial Actions (JA)
Primary Actor's Goal	Manage service member's Pre-Trial Confinement and IRO hearing process, coordinating service member's release after the IRO hearing.
Pre-Conditions	CMDA receives incident file from Law Enforcement (LE) or a case from Investigations (INV). Service Member is not serving suspended portion of prior sentence.
Post-Conditions	Case jurisdiction ends for COR and CMDA continues adjudication process, deciding to award non-punitive action (e.g. counseling or no action). The disposition is sent back to originating community and the case is closed.
Basic Use Case Flow	<ol style="list-style-type: none"> 1. CMDA reviews Investigation Report. 2. CMDA sends Pre-Trial Confinement Order to COR. 3. CMDA submits a report to NSIPS or MCTFS. 4. COR receives a Pre-Trial Confinement Order from CMDA. 5. COR conducts Pre-Trial Confinement. 6. CMDA sends 72-hour letter to COR through NJIS, 7. COR receives 72-hour letter from CMDA through NJIS.

Use Cases Functional Requirements Document

- | | |
|--|---|
| | <ol style="list-style-type: none">8. CMDA sends Notification of Pre-Trial Confinement to JA through NJIS.9. JA receives Notification of Pre-Trial Confinement from CMDA through NJIS and files the Notification of Pre-Trial Confinement.10. COR conducts IRO hearing.11. COR sends IRO hearing results to CMDA through NJIS. (The results, in this case, order the service member's release.)12. CMDA receives IRO hearing results from COR through NJIS.13. COR sends service member back to CMDA.14. CMDA receives service member back from COR. |
|--|---|

Use Cases Functional Requirements Document



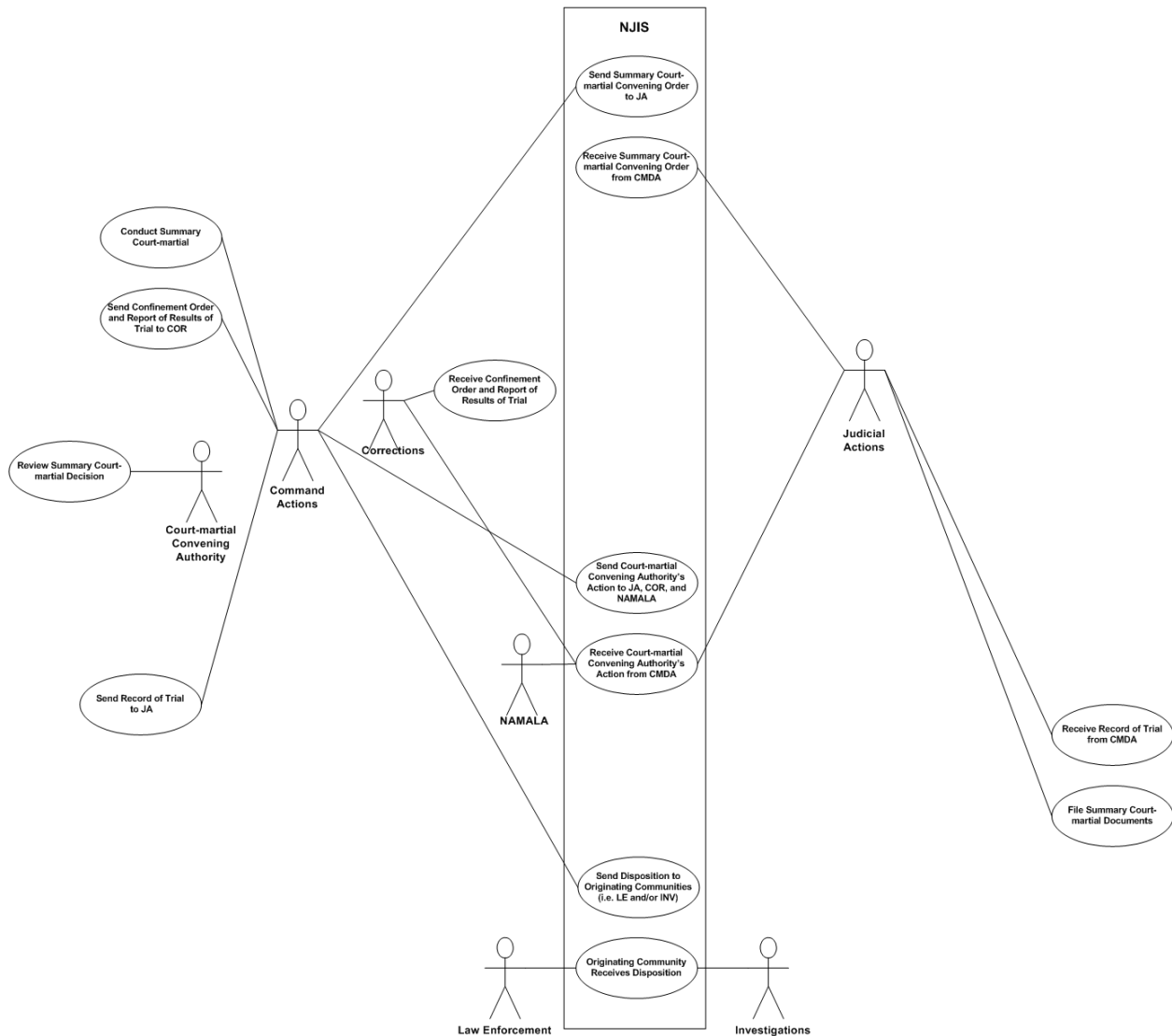
Use Cases

Functional Requirements Document

Use Case Identifier	Use Case 7
Description	Command Actions (CMDA) sends Summary Court-martial Convening Order to Judicial Actions (JA), conducts Summary Court-martial, and Service Member is sentenced to confinement.
Primary Actor	CMDA
Secondary Actors	Court Martial Convening Authority, JA, Corrections (COR), Navy-Marine Corps Appellate Leave Activity (NAMALA)
Primary Actor's Goal	Conduct Summary Court-martial and send relevant court documents such as the Convening Authority's Action and Record of Trial to the necessary communities.
Pre-Conditions	Command notified of incident and sends incident to LE after preliminary inquiry. After finalizing incident file LE sends it to CMDA for adjudication. CMDA sends to service member to pre-trial confinement. Service member commits offense while in pre-trial confinement, and after appropriate consequence is awarded service member is taken by Command for adjudication. Command requests legal services from JA, and JA recommends Summary court-martial.
Post-Conditions	Case is closed for CMDA and originating community, but activity continues for COR as Service Member is sentenced to confinement.
Basic Use Case Flow	<ol style="list-style-type: none"> 1. CMDA sends Summary Court-martial Convening Order to JA through NJIS. 2. JA receives Summary Court-martial Convening Order from CMDA through NJIS. 3. CMDA conducts Summary Court-martial and Service Member is sentenced to confinement. 4. CMDA sends Confinement Order, 2704, and Report of Results of Trial to COR. 5. COR receives Confinement Order, 2704, and Report of Results of Trial from CMDA.

Use Cases Functional Requirements Document

6. Court-martial Convening Authority reviews Summary Court-martial decision.
7. CMDA sends Court-martial Convening Authority's Action to JA, COR, and NAMALA through NJIS.
8. JA, COR, and NAMALA receive Court-martial Convening Authority's Action from CMDA through NJIS.
9. CMDA sends Record of Trial to JA.
10. JA receives Record of Trial from CMDA.
11. JA files Summary Court-martial documents.
12. CMDA sends disposition to originating communities (e.g. LE and/or INV) through NJIS.
13. Originating community (e.g. LE and/or INV) receives disposition through NJIS.



Use Cases Functional Requirements Document

Use Case Identifier	Use Case 8
Description	Command Actions (CMDA) sends Article 32 Order to Judicial Actions (JA), receives the Article 32 Hearing results from JA, and supports the General or Special Court-martial process. The Service Member is not sentenced to confinement.
Primary Actor	CMDA
Secondary Actor	JA, Corrections (COR), and Navy-Marine Corps Appellate Leave Activity (NAMALA)
Primary Actor's Goal	Send Article 32 Order to JA, support the General or Special Court-martial process, and send relevant documents to the necessary communities.
Pre-Conditions	Case originates in LE or INV, CMDA receives the case or incident file, and CMDA sends a request for legal services to JA. JA provides legal services. CMDA receives a recommendation from JA, General or Special Court Martial is identified as the type of punishment, and CMDA determines an Article 32 Hearing is necessary.
Post-Conditions	Case is closed.
Basic Use Case Flow	<ol style="list-style-type: none"> 1. CMDA sends Article 32 Order to JA through NJIS. 2. JA receives Article 32 Order from CMDA through NJIS. 3. JA conducts Article 32. 4. JA sends Article 32 results to CMDA through NJIS. 5. CMDA receives Article 32 results from JA through NJIS. 6. JA conducts General or Special Court-martial process. 7. CMDA supports the General or Special Court-martial process. 8. JA sends disposition to CMDA through NJIS. 9. CMDA receives disposition from JA through NJIS.

Use Cases Functional Requirements Document

- | | |
|--|--|
| | <ol style="list-style-type: none">10. Court-martial Convening Authority reviews General or Special Court-martial decision.11. CMDA sends Court-martial Convening Authority's action to JA, COR, and NAMALA through NJIS.12. JA, COR, and NAMALA receive Court-martial Convening Authority's Action from CMDA through NJIS.13. CMDA sends disposition to originating community (e.g. LE and/or INV) through NJIS14. Originating community (e.g. LE and/or INV) receives disposition through NJIS. |
|--|--|

Use Cases Functional Requirements Document



Use Cases

Functional Requirements Document

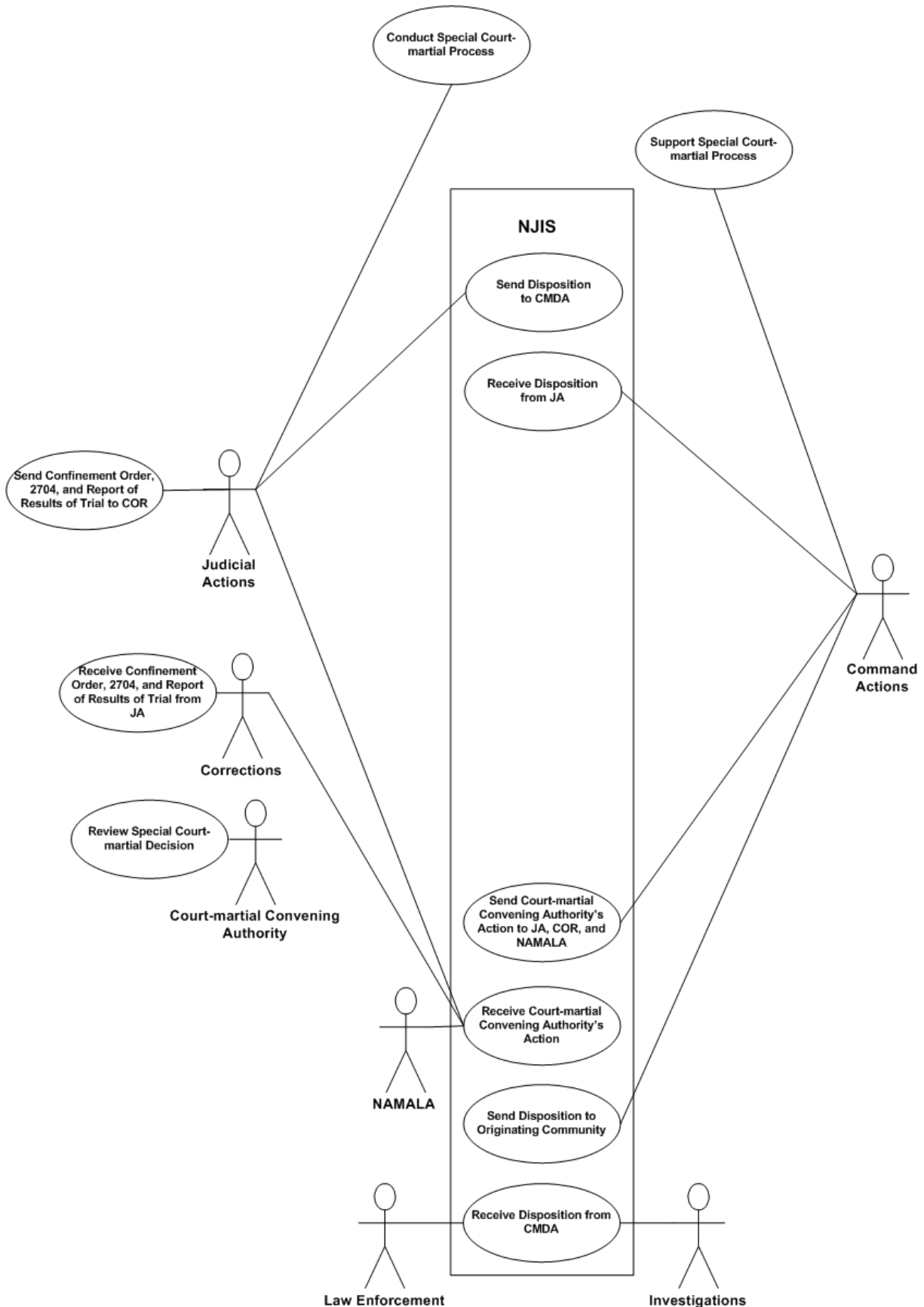
Use Case Identifier	Use Case 9
Description	Command Actions (CMDA) determines that an Article 32 Hearing is not necessary and supports the Special Court-martial process. Service Member is sentenced to confinement.
Primary Actor	CMDA
Secondary Actors	Judicial Actions (JA), Corrections (COR), and Navy-Marine Corps Appellate Leave Activity (NAMALA)
Primary Actor's Goal	Support the Special Court-martial process and complete and send relevant documents to the necessary communities.
Pre-Conditions	Case originates in LE or INV, CMDA receives a case or incident file and sends a request for legal services to JA. JA provides legal services. CMDA receives a recommendation from JA and identifies Special Court-martial as the appropriate course of action, making an Article 32 Hearing unnecessary.
Post-Conditions	Case is closed for CMDA and originating community. Activity continues in COR and NAMALA due to Service Member confinement.
Basic Use Case Flow	<ol style="list-style-type: none"> 1. JA conducts Special Court-martial process. 2. CMDA supports Special Court-martial process. 3. JA sends disposition to CMDA through NJIS. 4. CMDA receives disposition from JA through NJIS. 5. JA sends Confinement Order, 2704, and Report of Results of Trial to COR. 6. COR receives Confinement Order, 2704, and Report of Results of Trial from JA. 7. Court-martial Convening Authority reviews the Special Court-martial decision.

Use Cases

Functional Requirements Document

- | | |
|--|--|
| | <ol style="list-style-type: none">8. CMDA sends Court-martial Convening Authority's action to JA, COR, and NAMALA through NJIS.9. JA, COR, and NAMALA receive Court-martial Convening Authority's action through NJIS.10. CMDA sends disposition to the originating community (e.g. LE and/or INV) through NJIS.11. Originating community (e.g. LE and/or INV) receives disposition through NJIS. |
|--|--|

Use Cases Functional Requirements Document



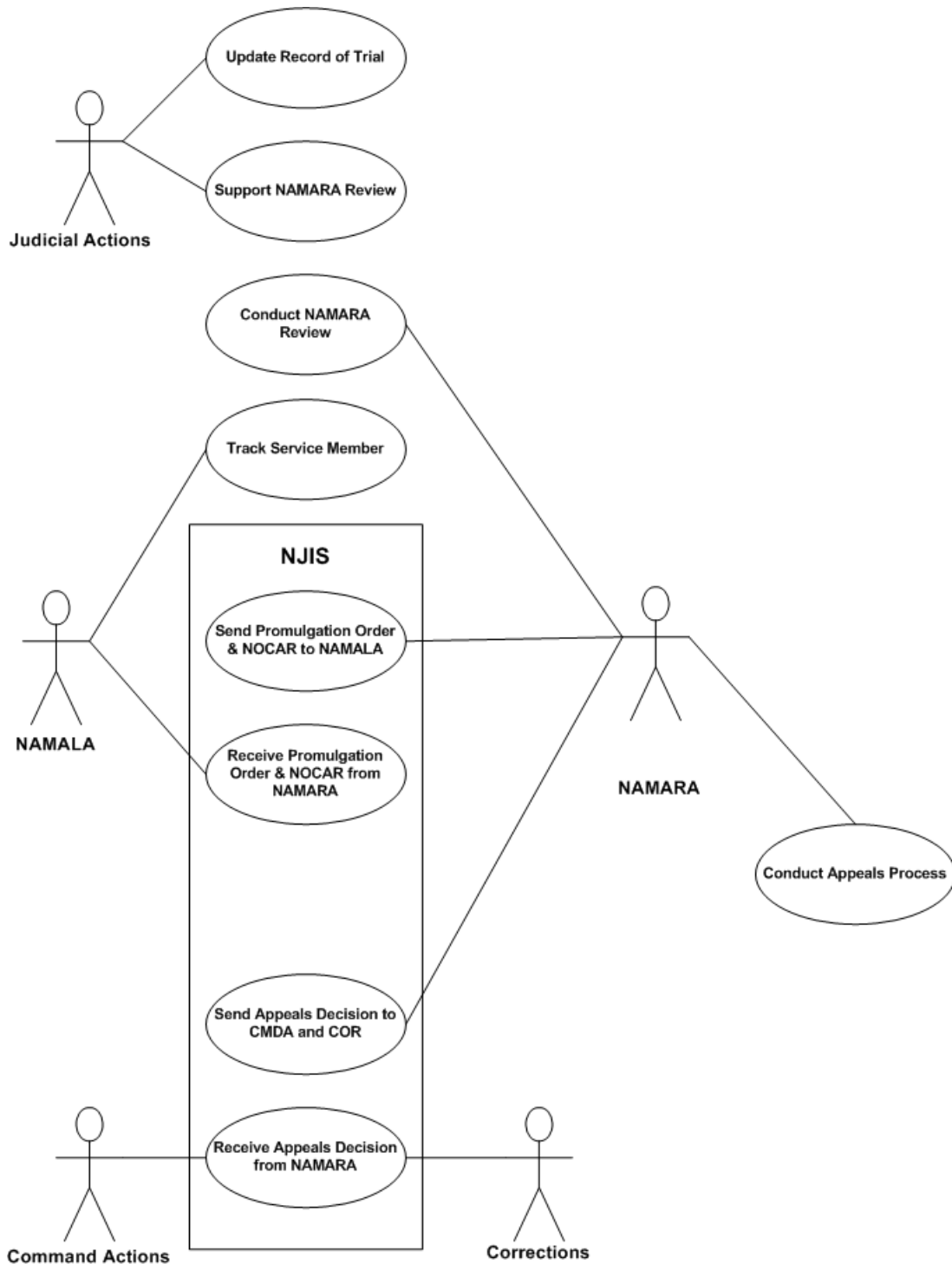
Use Cases

Functional Requirements Document

Use Case Identifier	Use Case 10
Description	Upon receiving Court-martial Convening Authority's action from General or Special Court-martial proceedings, Judicial Actions (JA) updates Record of Trial and supports the Navy-Marine Corps Appellate Review Activity (NAMARA) as it conducts the appeals process for Service Member sentenced to confinement.
Primary Actor	NAMARA
Secondary Actors	JA, Command Actions (CMDA), Navy –Marine Corps Appellate Leave Activity (NAMALA), and Corrections (COR)
Primary Actor's Goal	Conduct NAMARA review, send Promulgation Order and Notification of Completion of Appellate Review (NOCAR) to NAMALA, conduct appeals process, and send appeals decision to CMDA and COR.
Pre-Conditions	Incident originates in Law Enforcement (LE) or Investigations (INV) and transfers to CMDA. CMDA sends a request for legal services to JA. JA sends recommendation and General or Special Court Martial is identified as the type of punishment. JA conducts General or Special Court-martial and sentences Service Member to confinement. JA sends disposition to CMDA. CMDA sends Court-martial Convening Authority's action to JA, COR, and NAMALA, which is received through NJIS.
Post-Conditions	Case is closed. COR releases or retains Service Member based on appeal decision(s).
Basic Use Case Flow	<ol style="list-style-type: none"> 1. JA updates Record of Trial. 2. JA supports NAMARA review. 3. NAMARA conducts NAMARA review. 4. NAMALA tracks service member. 5. NAMARA sends Promulgation Order and NOCAR to NAMALA through NJIS.

Use Cases Functional Requirements Document

6. NAMALA receives Promulgation Order and NOCAR from NAMARA through NJIS.
7. NAMARA conducts appeals process.
8. NAMARA sends appeals decision to CMDA and COR through NJIS.
9. CMDA and COR receive appeals decision from NAMARA through NJIS.

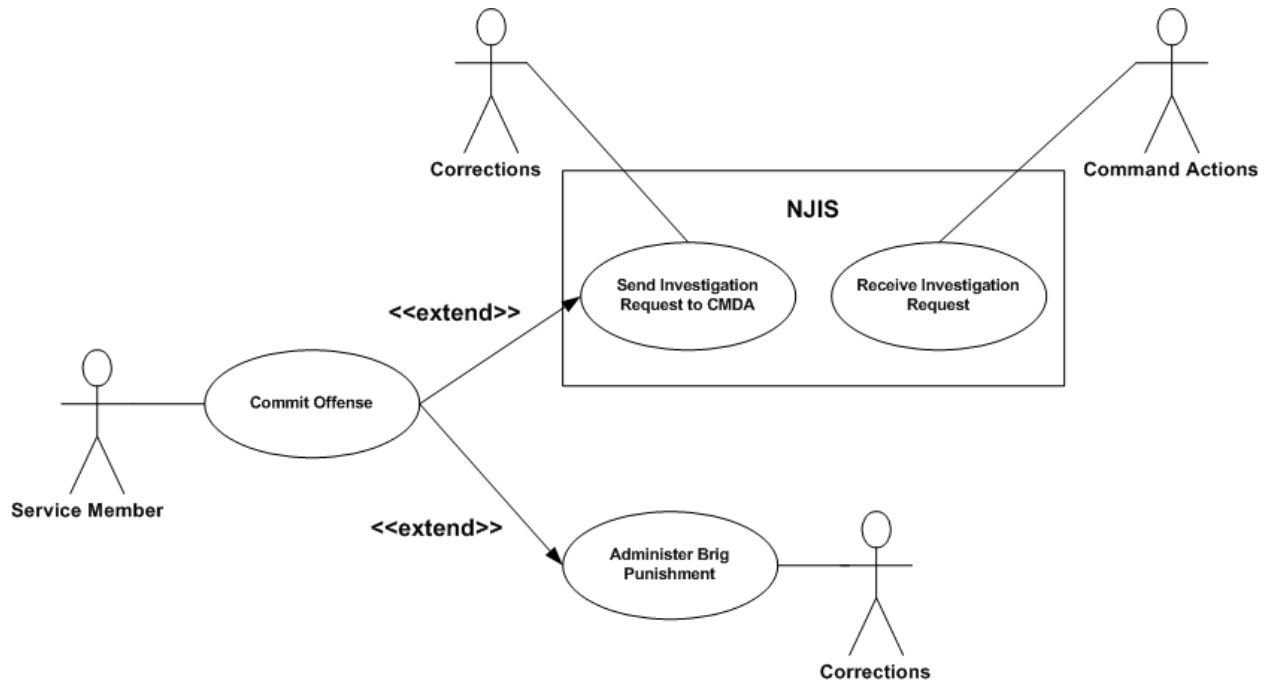


Use Cases

Functional Requirements Document

Use Case Identifier	Use Case 11
Description	Service member is in post-trial confinement and commits an offense while in confinement. Corrections (COR) sends an investigation request to Command Actions (CMDA) or administers brig punishment.
Primary Actor	COR
Secondary Actor	CMDA
Primary Actor's Goal	Send investigation request to CMDA or administer brig punishment as consequence for incident
Pre-Conditions	Service member commits offense while in post-trial confinement.
Post-Conditions	If given brig punishment, service member continues to serve original sentence after punishment is awarded. If case is transferred to CMDA, CMDA conducts preliminary inquiry, reviews the investigation report, and determines, through disciplinary or non-disciplinary action, the consequences that will be awarded in addition to service member's original sentence. In both cases, after service member serves sentence, service member can be released as an appellant, on mandatory supervised release or parole, or on own recognizance.
Basic Use Case Flow	<p>Investigation Request Sent to CMDA:</p> <ol style="list-style-type: none"> 1. Service Member commits offense during post-trial confinement. 2a. COR sends investigation request to CMDA through NJIS 3a. CMDA receives investigation request from COR through NJIS <p>Brig Punishment Awarded:</p> <ol style="list-style-type: none"> 2. Service Member commits offense during post-trial confinement. 2b. COR administers brig punishment.

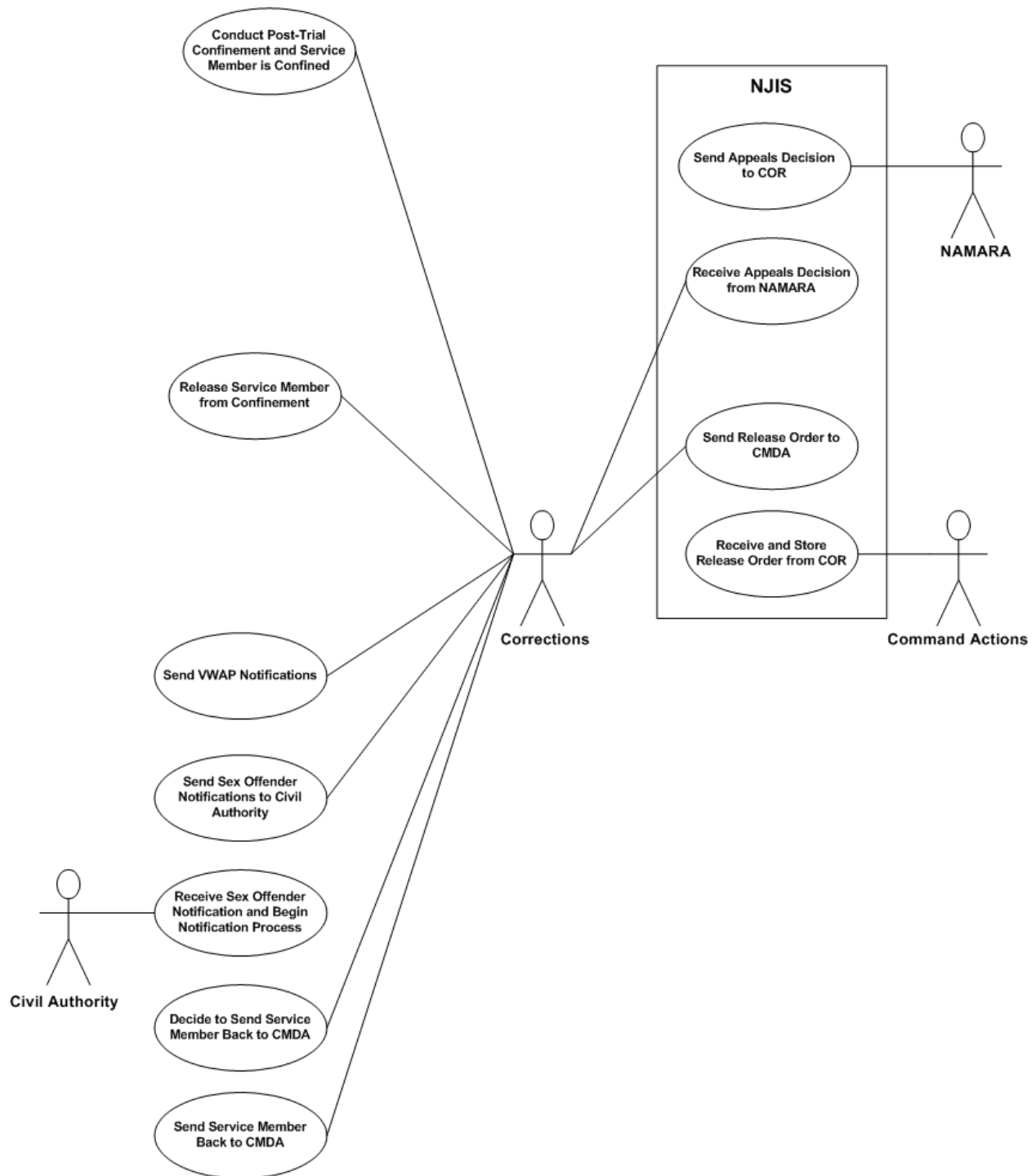
Use Cases Functional Requirements Document



Use Cases Functional Requirements Document

Use Case Identifier	Use Case 12
Description	Service member is in post-trial confinement and Corrections (COR) receives an appeals decision ordering the release of the service member. COR releases service member from confinement.
Primary Actor	COR
Secondary Actor	Navy-Marine Corps Appellate Review Activity (NAMARA), Command Actions (CMDA)
Primary Actor's Goal	Receive appeals decision and release service member if necessary.
Pre-Conditions	Service member is in post-trial confinement. Service member has already been through one round of appeals but it was determined that further action needed to be taken and service member was not released. Service member's case is such that VWAP and sex offender notifications must be sent out upon the service member's release.
Post-Conditions	Case closed.
Basic Use Case Flow	<ol style="list-style-type: none"> 1. COR conducts post-trial confinement and service member is confined. 2. NAMARA sends appeals decision to COR through NJIS. 3. COR receives appeals decision from NAMARA through NJIS. 4. COR releases service member from confinement. 5. COR sends release order to CMDA through NJIS. 6. CMDA receives and stores release order from COR through NJIS. 7. COR sends VWAP notifications. 8. COR sends sex offender notifications to Civil Authority. 9. Civil Authority receives sex offender notifications and begins notification process. 10. COR determines to send service member back to CMDA. 11. COR sends service member back to CMDA.

Use Cases Functional Requirements Document

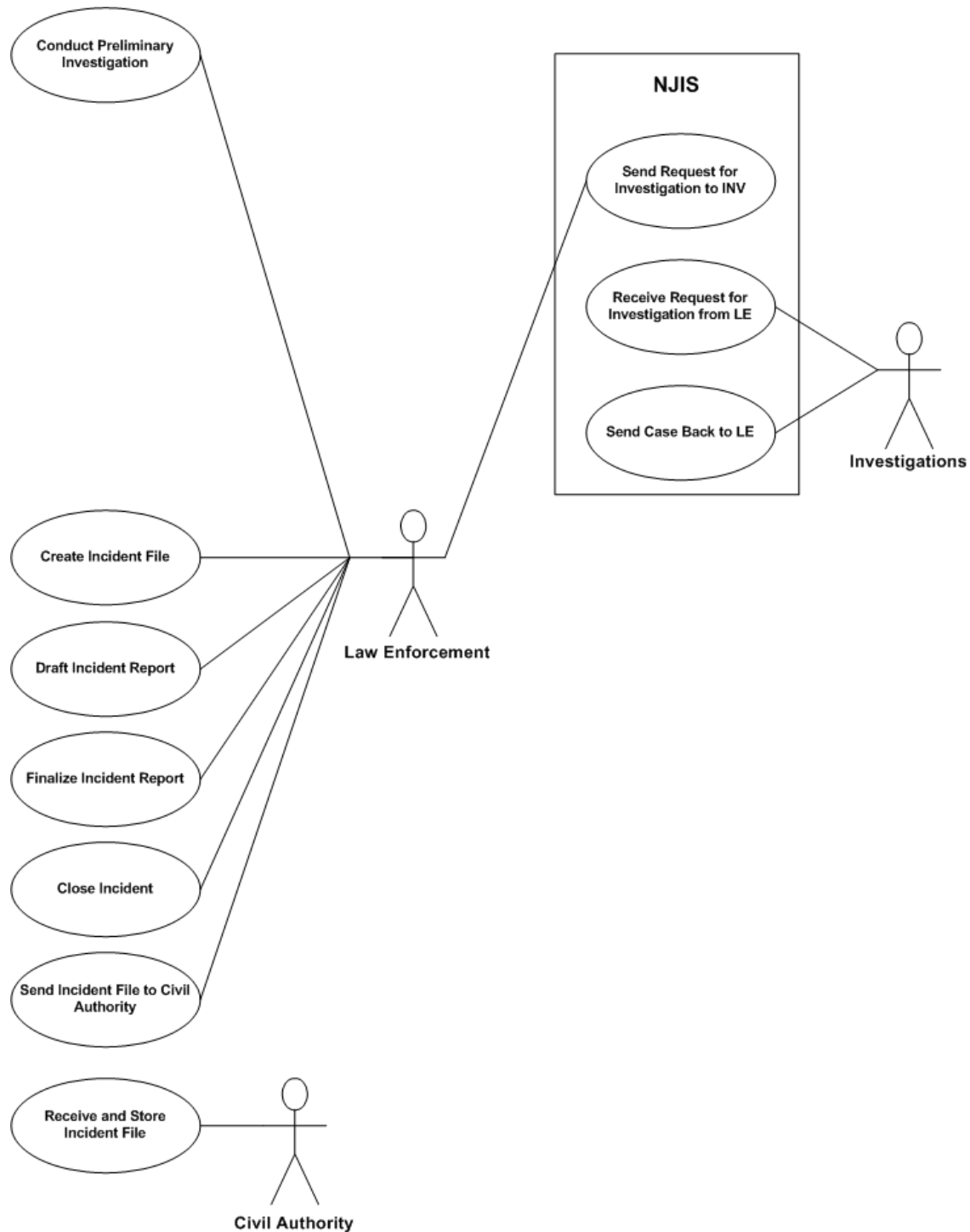


Use Cases Functional Requirements Document

Use Case Identifier	Use Case 13
Description	Law Enforcement (LE) conducts a preliminary investigation, sends a request for an investigation to Investigations (INV), INV rejects the case, LE creates and finalizes the incident report, closes the incident, and sends the incident file to Civil Authority.
Primary Actor	LE
Secondary Actor	INV, Civil Authority
Primary Actor's Goal	Request an investigation from INV upon completion of preliminary investigation. Create incident file and close incident in case of rejection.
Pre-Conditions	Dispatch officer is notified of a new incident (i.e. via a phone call, another individual notifying LE via a walk-up, or LE comes upon the incident themselves) and captures the incident information.
Post-Conditions	Law Enforcement confirms the incident file was sent successfully to Civil Authority.
Basic Use Case Flow	<ol style="list-style-type: none"> 1. LE conducts a preliminary investigation. 2. LE sends a request for investigation to INV through NJIS. 3. INV receives a request for investigation from LE through NJIS. 4. INV rejects the case and sends the case back to LE through NJIS. 5. LE creates incident file. 6. LE drafts an incident report. 7. LE finalizes the incident report. 8. LE closes the incident. 9. LE determines where to send the incident file (i.e. CMDA or Civil Authority) and sends the incident file to Civil Authority.

Use Cases Functional Requirements Document

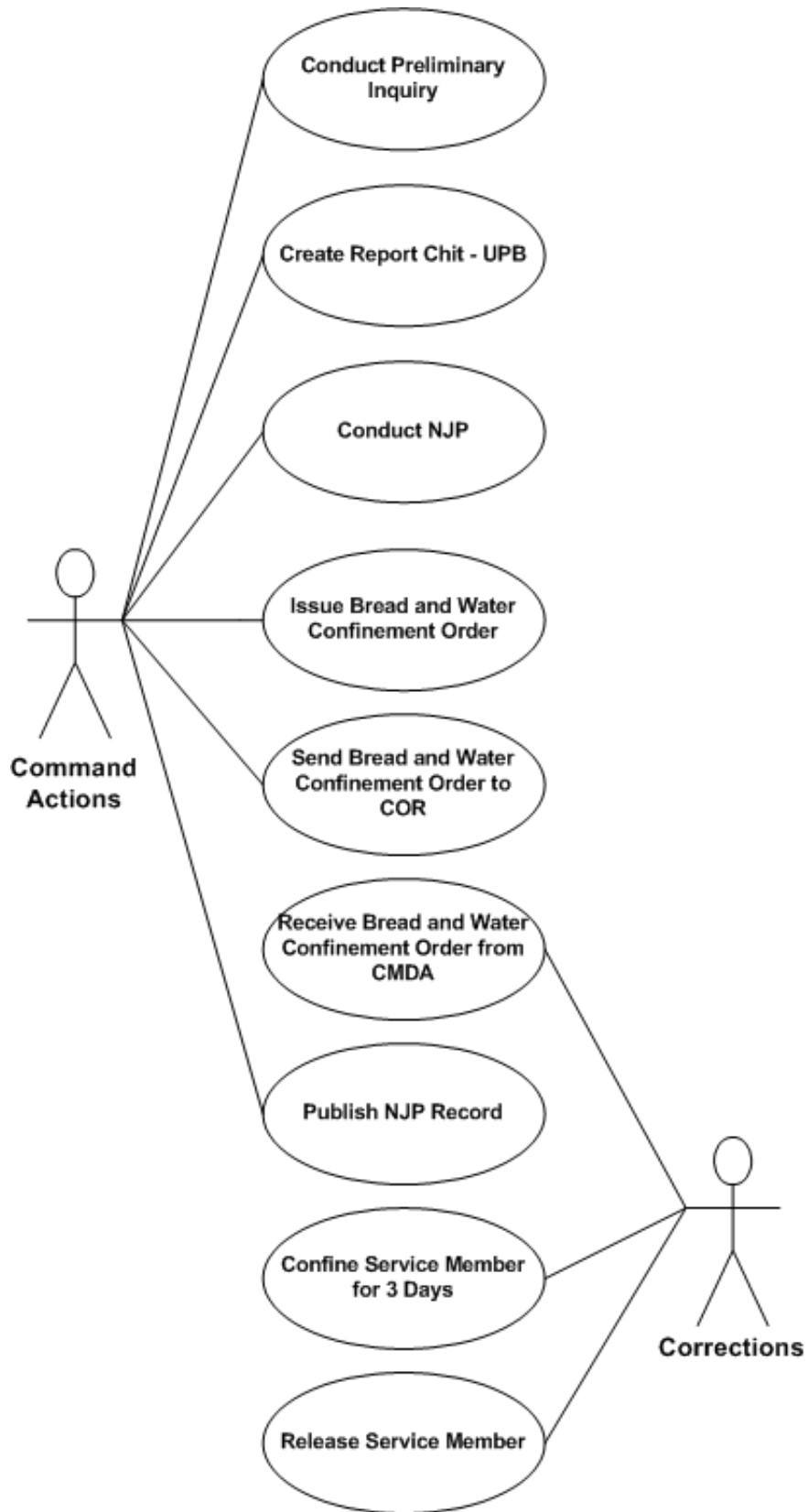
10. Civil Authority receives and stores the incident file.



Use Cases Functional Requirements Document

Use Case Identifier	Use Case 14
Description	An incident occurs within Command. Command Actions (CMDA) conducts a preliminary inquiry and the case is not sent to another community. CMDA pursues Non-Judicial Punishment (NJP) and issues a Bread and Water Confinement Order.
Primary Actor	CMDA
Secondary Actor	Corrections (COR)
Primary Actor's Goal	Pursue NJP, issue Bread and Water Confinement Order, and send Bread and Water Confinement Order to COR.
Pre-Conditions	Incident occurs within Command. Service Member is not serving suspended portion of prior sentence, pre-trial confinement is not necessary, and the incident is not a desertion incident.
Post-Conditions	Case is closed.
Basic Use Case Flow	<ol style="list-style-type: none"> 1. CMDA conducts preliminary inquiry of incident. 2. CMDA creates Report Chit - UPB. 3. CMDA conducts NJP. 4. CMDA issues Bread and Water Confinement Order. 5. CMDA sends Bread and Water Confinement Order to Corrections (COR). 6. COR receives Bread and Water Confinement Order from CMDA. 7. CMDA publishes NJP record. 8. COR confines service member for 3 days. 9. COR releases service member.

Use Cases Functional Requirements Document

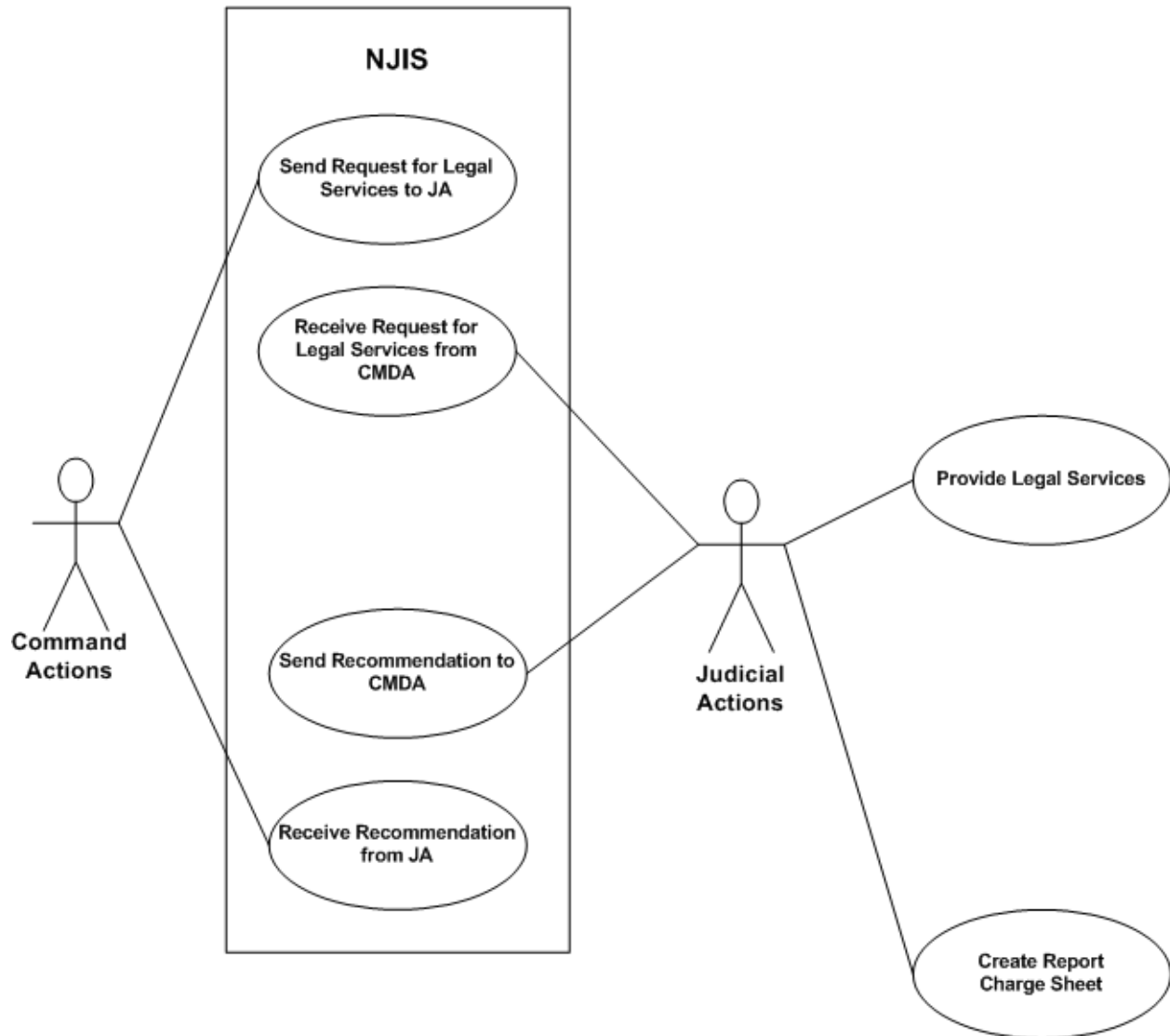


Use Cases

Functional Requirements Document

Use Case Identifier	Use Case 15
Description	Command Actions (CMDA) sends a request for legal services to Judicial Actions (JA). JA provides legal services and sends recommendation to CMDA.
Primary Actor	JA
Secondary Actor	CMDA
Primary Actor's Goal	Provide legal services to CMDA and send recommendation to CMDA.
Pre-Conditions	Incident occurs in Command and preliminary inquiry is conducted. Law enforcement communities are not involved. Service member is not serving suspended portion of prior sentence, pre-trial confinement is not necessary, a report chit-UPB is created, and the incident is not a desertion incident. CMDA decides to pursue a court-martial action.
Post-Conditions	Article 32 hearing is deemed unnecessary. JA determines whether CMDA is conducting Non-Judicial Punishment (NJP) or Summary Court-martial. If CMDA is conducting NJP, case jurisdiction ends. If CMDA is not conducting NJP or Summary Court-martial, JA conducts Special court-martial. Service member is sentenced to confinement and sent to Corrections (COR). Case is closed but confinement activity continues.
Basic Use Case Flow	<ol style="list-style-type: none"> 1. CMDA sends request for legal services to JA through NJIS. 2. JA receives request for legal services from CMDA through NJIS. 3. JA provides legal services. 4. JA sends recommendation to CMDA through NJIS. 5. CMDA receives recommendation from JA through NJIS. 6. JA creates Report "Charge Sheet."

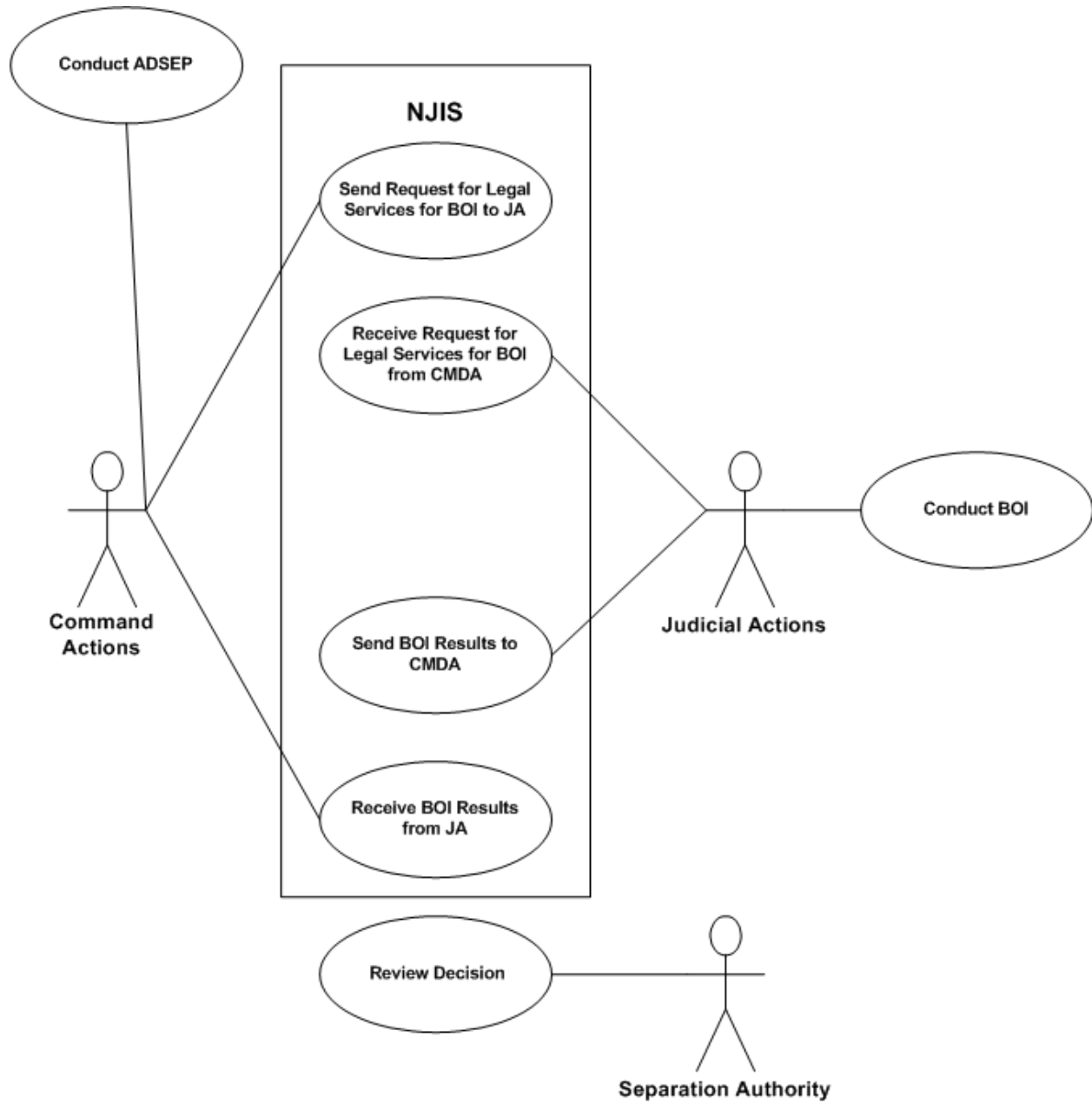
Use Cases Functional Requirements Document



Use Cases Functional Requirements Document

Use Case Identifier	Use Case 16
Description	When deciding what type of disciplinary action to pursue for an incident involving an officer, Command Actions (CMDA) decides to administratively separate (ADSEP) the service member. CMDA then sends the case to Judicial Actions (JA) for a Board of Inquiry (BOI) and the results are sent back to CMDA to finish the ADSEP process.
Primary Actor	CMDA
Secondary Actor	JA, Separation Authority
Primary Actor's Goal	Administratively separate the service member.
Pre-Conditions	Incident involving an officer occurs in Command and preliminary inquiry is conducted. Law enforcement communities are not involved. Service member is not serving suspended portion of prior sentence, pre-trial confinement is not necessary, a report chit-UPB is created, and the incident is not a desertion incident. CMDA decides to pursue a non-court martial action.
Post-Conditions	Case closed.
Basic Use Case Flow	<ol style="list-style-type: none"> 1. CMDA conducts ADSEP. 2. CMDA sends a request for legal services for BOI to JA through NJIS. 3. JA receives a request for legal services for BOI from CMDA through NJIS. 4. JA conducts BOI. 5. JA sends BOI results to CMDA through NJIS. 6. CMDA receives BOI results from JA through NJIS. 7. Separation Authority reviews decision.

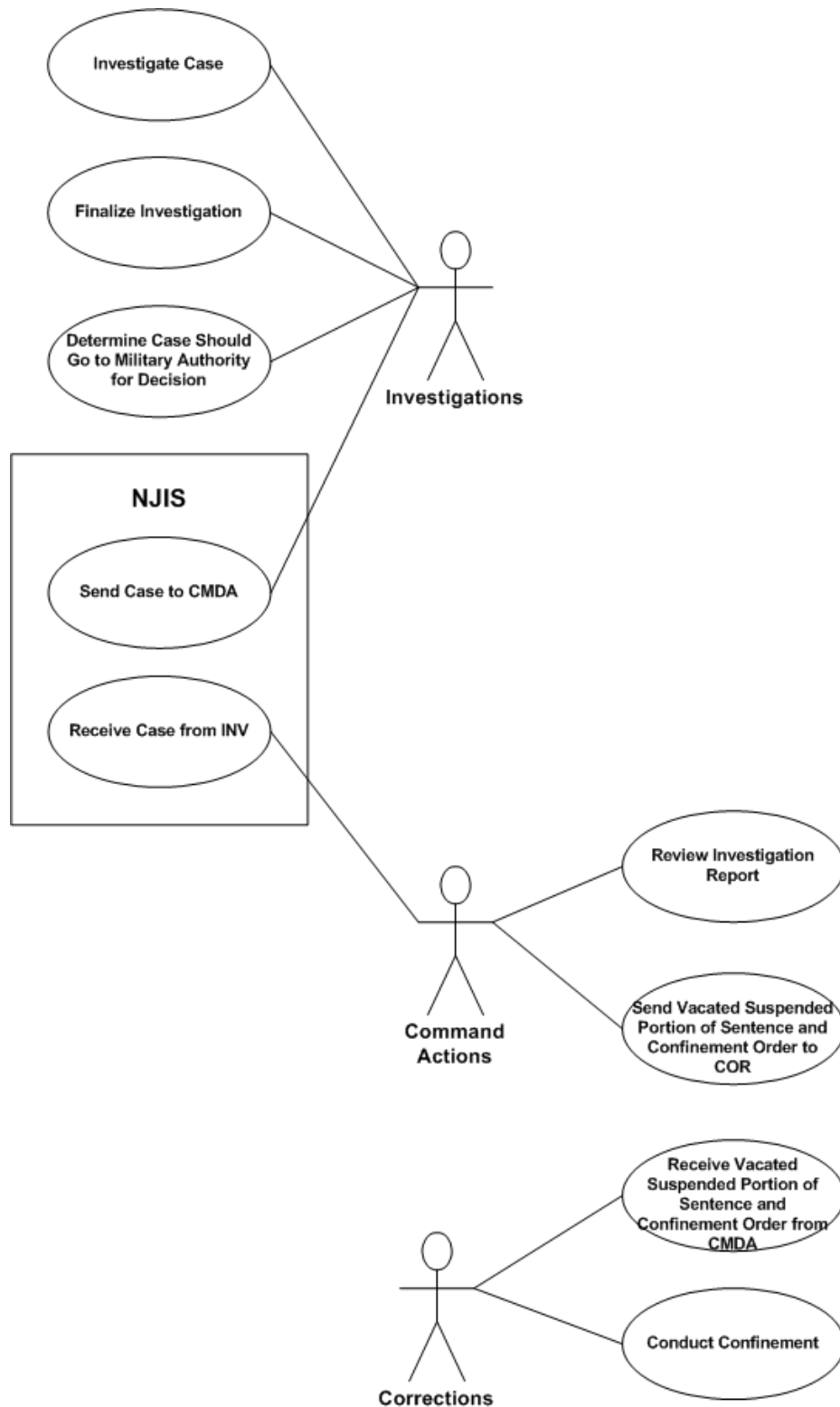
Use Cases Functional Requirements Document



Use Cases Functional Requirements Document

Use Case Identifier	Use Case 17
Description	Investigations (INV) investigates a case, determines the case to fall under military jurisdiction for a decision, and sends the case to Command Actions (CMDA). CMDA receives the case, reviews the investigation report, and discovers that service member was serving vacated portion of suspended sentence. Service member is sent to Corrections (COR) to serve remaining portion of sentence.
Primary Actor	CMDA
Secondary Actor	INV, COR
Primary Actor's Goal	Review the investigation report and send the service member to COR to serve the vacated portion of their sentence.
Pre-Conditions	INV is notified of an incident.
Post-Conditions	COR conducts confinement with NAMALA. Service member is then sent to the Federal Bureau of Prisons and COR case jurisdiction ends.
Basic Use Case Flow	<ol style="list-style-type: none"> 1. INV actively investigates case. 2. INV finalizes investigation of case. 3. INV determines that the case should go to a military authority for decision. 4. INV sends the case to CMDA through NJIS. 5. CMDA receives the case through NJIS. 6. CMDA reviews investigation report and determines that service member was serving a vacated portion of a suspended sentence. 7. CMDA sends Vacated Suspended Portion of Sentence and Confinement Order to COR. 8. COR receives Vacated Suspended Portion of Sentence and Confinement Order from CMDA. 9. COR conducts confinement.

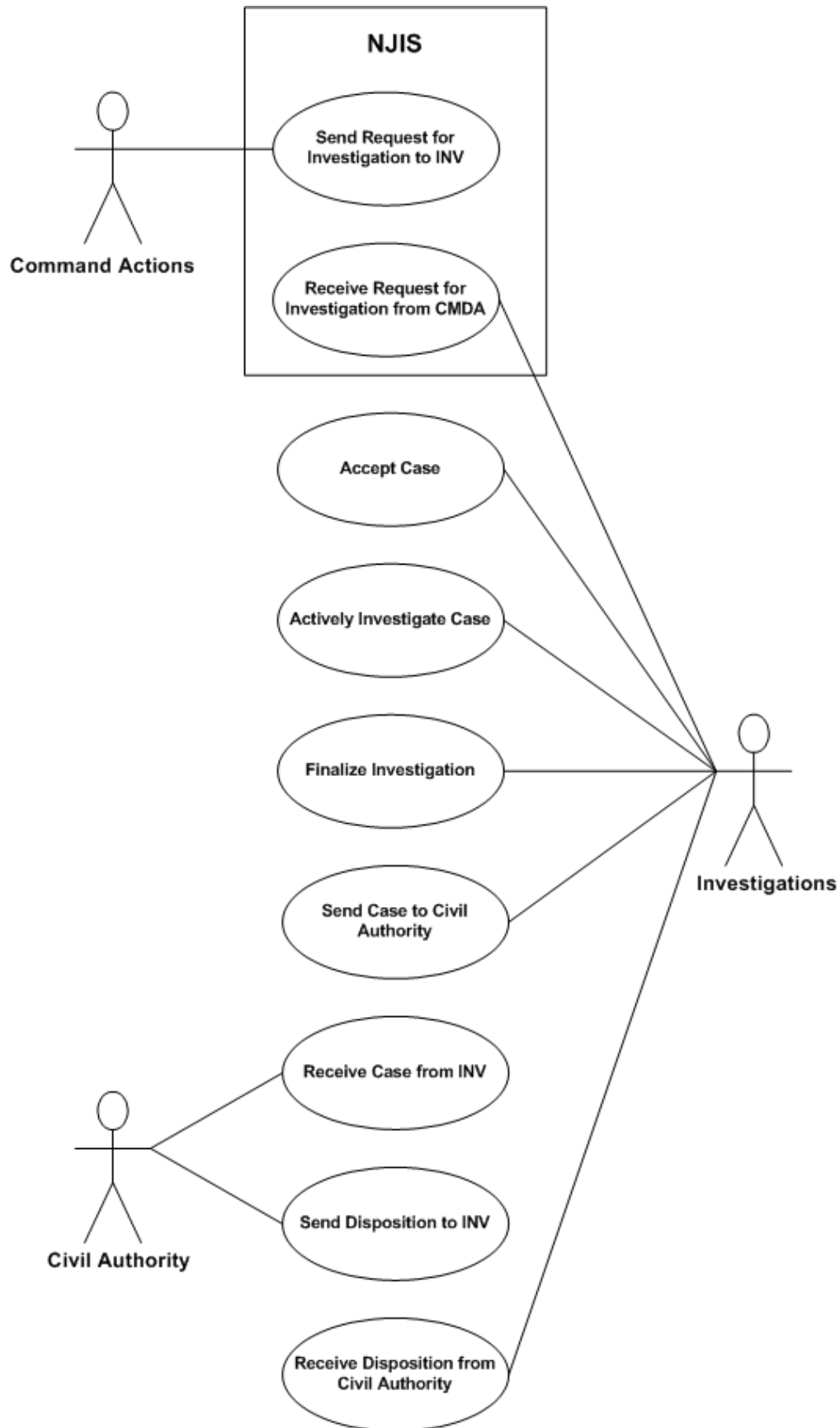
Use Cases Functional Requirements Document



Use Cases Functional Requirements Document

Use Case Identifier	Use Case 18
Description	Investigations (INV) receives a request for investigation from Command Actions (CMDA), accepts and actively investigates the case, finalizes the investigation, determines the case is a civil case, sends case to Civil Authority, and receives disposition from Civil Authority.
Primary Actor	INV
Secondary Actor	CMDA, Civil Authority
Primary Actor's Goal	Accept a request for investigation from CMDA, actively investigate case, finalize investigation, and send case to Civil Authority.
Pre-Conditions	CMDA is notified of an incident and determines an investigation is necessary.
Post-Conditions	Case is closed.
Basic Use Case Flow	<ol style="list-style-type: none"> 1. CMDA sends INV a request for investigation through NJIS. 2. INV receives a request for investigation from CMDA through NJIS. 3. INV accepts case. 4. INV actively investigates case. 5. INV finalizes investigation. 6. INV sends case to Civil Authority. 7. Civil Authority receives case from INV. 8. Civil Authority sends disposition to INV. 9. INV receives disposition from Civil Authority.

Use Cases Functional Requirements Document

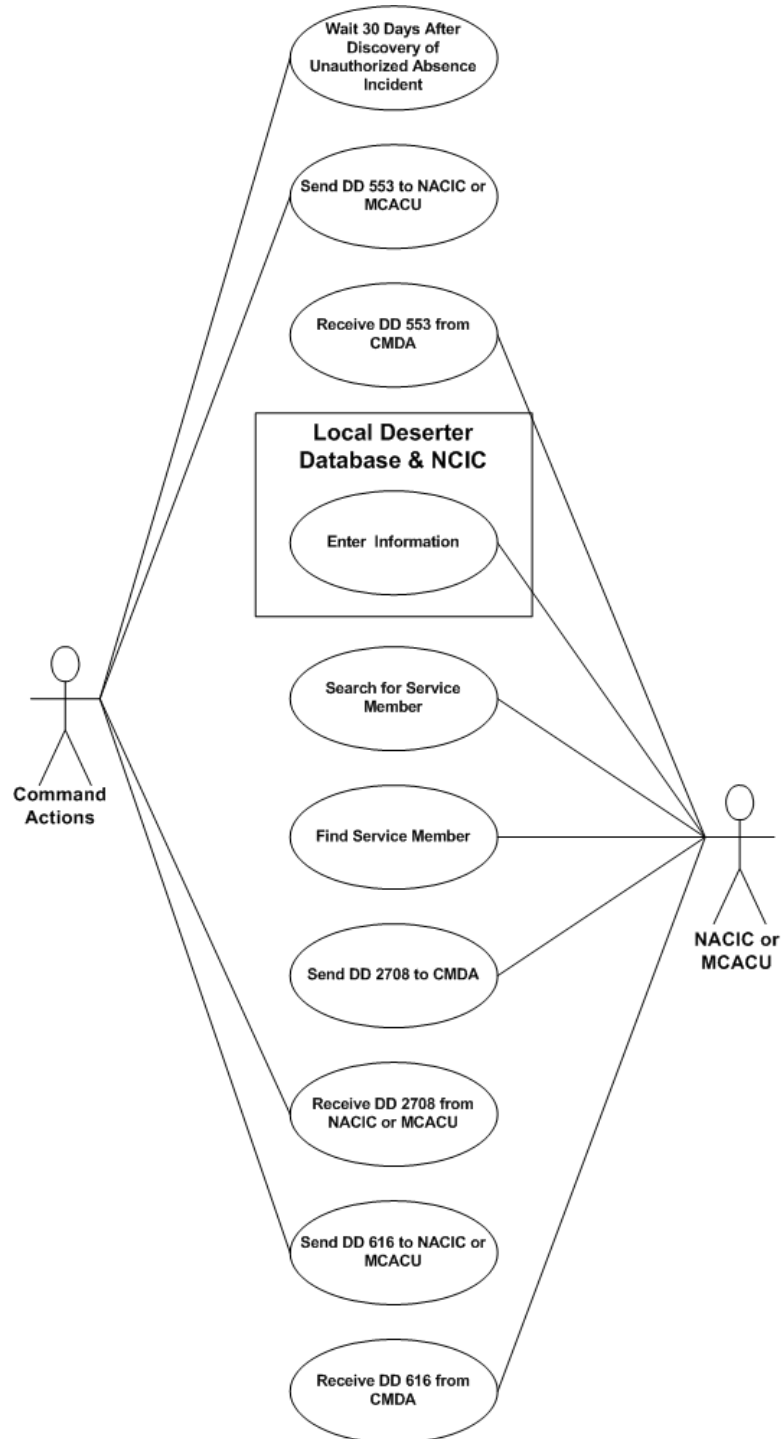


Use Cases

Functional Requirements Document

Use Case Identifier	Use Case 19
Description	Command Actions (CMDA) is notified of an incident that is a desertion incident. After 3 days the Navy Absentee Collection and Information Center (NACIC) or the Marine Corps Absentee Collection Unit (MCACU) is notified and the search process is begun. The service member is then found and returned to CMDA.
Primary Actor	NACIC, MCACU
Secondary Actor	CMDA
Primary Actor's Goal	Search for missing service member and send appropriate forms after the service member is found.
Pre-Conditions	Command notified of incident and conducts preliminary inquiry. The incident is not sent to the law enforcement communities and the incident is determined to be a desertion incident.
Post-Conditions	Service member is returned to CMDA, potentially for adjudication on charges. Case jurisdiction ends for NACIC or MCACU.
Basic Use Case Flow	<ol style="list-style-type: none"> 1. CMDA waits 30 days after discovery of Unauthorized Absence (UA) incident. 2. CMDA sends DD 553 to NACIC or MCACU. 3. NACIC or MCACU receives the DD 553 from CMDA. 4. NACIC or MCACU enters information into local deserter database and National Crime Information Center (NCIC). 5. NACIC or MCACU searches for service member. 6. NACIC or MCACU finds service member. 7. NACIC or MCACU sends DD 2708 to CMDA. 8. CMDA receives DD 2708 from NACIC or MCACU. 9. CMDA sends DD 616 to NACIC or MCACU. 10. NACIC or MCACU receives DD 616 from CMDA.

Use Cases Functional Requirements Document



Use Cases Functional Requirements Document

Use Case Identifier	Use Case 20
Description	Service member violates parole and after the Naval Clemency and Parole Board (NC&PB) conducts the Clemency and Parole Board the service member is sent back to Corrections (COR) for confinement.
Primary Actor	NC&PB
Secondary Actor	COR
Primary Actor's Goal	Send Parole Violation letter and confinement order to COR and conduct Clemency and Parole Board.
Pre-Conditions	Service member commits an offense that qualifies as a violation of his or her parole. The consequence is determined to be a return to confinement.
Post-Conditions	Case jurisdiction is closed for NC&PB but activity in COR continues due to service member confinement.
Basic Use Case Flow	<ol style="list-style-type: none"> 1. NC&PB sends Parole Violation letter and confinement order to COR. 2. COR receives the Parole Violation letter and confinement order from NC&PB. 3. NC&PB conducts the Clemency and Parole Board.

Use Cases Functional Requirements Document

